



香港金邊實業有限公司  
KAM PIN INDUSTRIAL (HK) LTD  
Architectural Coating & Metal Fabrication





[www.kampin.com.hk](http://www.kampin.com.hk)

---

Coating Application Specialist Since 1960  
Architectural Metal Fabricator Since 1994



©2022 Kam Pin Industrial (HK) Ltd.



Nagoya Station, Tokyo, Japan | 日本東京名古屋站新大樓



## TABLE OF CONTENTS | 目錄

---

HISTORY	歷史	5
KYNAR 500 / PVDF COATINGS	氟碳噴塗	7
KAMELEON PVDF COATING	變色龍氟碳噴塗	15
NATURAL PATTERNED PVDF COATING	氟碳仿自然圖案噴塗	17
STONIUM PVDF	仿石紋氟碳噴塗	25
TERRIUM PVDF	仿陶紋氟碳噴塗	29
TIMBRIUM PVDF	仿木紋氟碳噴塗	33
METALIUM PVDF	仿金屬氟碳噴塗	37
POWDER COATING	粉末噴塗	41
HEAT TRANSFER POWDER COATING	多彩粉末噴塗	45
POLYURETHANE COATING	聚氨酯噴塗	51
METAL FABRICATION	板金加工	55
COMPLEX BRAKE FORMING	複雜板金加工	61
CNC ROUTING & V-CUTTING	電腦數控雕刻及刨坑	63
SINGLE CURVE PLATE ROLLING	單曲板捲製	65
PERFORATION	沖孔加工	67
DOUBLE CURVATURE	雙曲板五金製作	69
PROJECTS	參與工程項目	73
CONTACTS	聯絡我們	75





Kam Pin is a well-established coating applicator and metal fabricator from Hong Kong. We have been in the fields of industrial and architectural coatings since 1960 and custom metal fabrication since 1995. We own a plant of 40,000m<sup>2</sup> in Dongguan China, with 3 automatic coating lines and high end fabrication machines.

香港金邊實業有限公司自 1960 年創辦以來，本著忠誠及重質量之經營宗旨在工業噴塗及建築上早已享負盛名。廠房位於中國東莞市，佔地面積多達四十萬平方呎，備有多組大型完善之噴塗生產線及高端板金成型設備，於1995年增設板金加工服務。



HKSAR Government HQ, Hong Kong | 香港政府新總部大樓 (添馬艦)

We produce high quality aluminum curtain wall panels, ceilings, louver systems, window frames, partitions and signage with different coating finishes. With half a century of experience in professional coating application, we can guarantee excellent workmanship that meets the highest standards in the world. Apart from fabrication and coating, we also provide free consultation services concerning coating and fabrication.

金邊主要從事幕牆鋁板、天花百葉窗屏風及招牌裝飾的五金成型及噴塗處理，憑著半世紀的專業噴經驗定能為貴公司提供最佳質量；除此以外，金邊亦為客戶提供免費的噴塗及五金加諮詢服務。

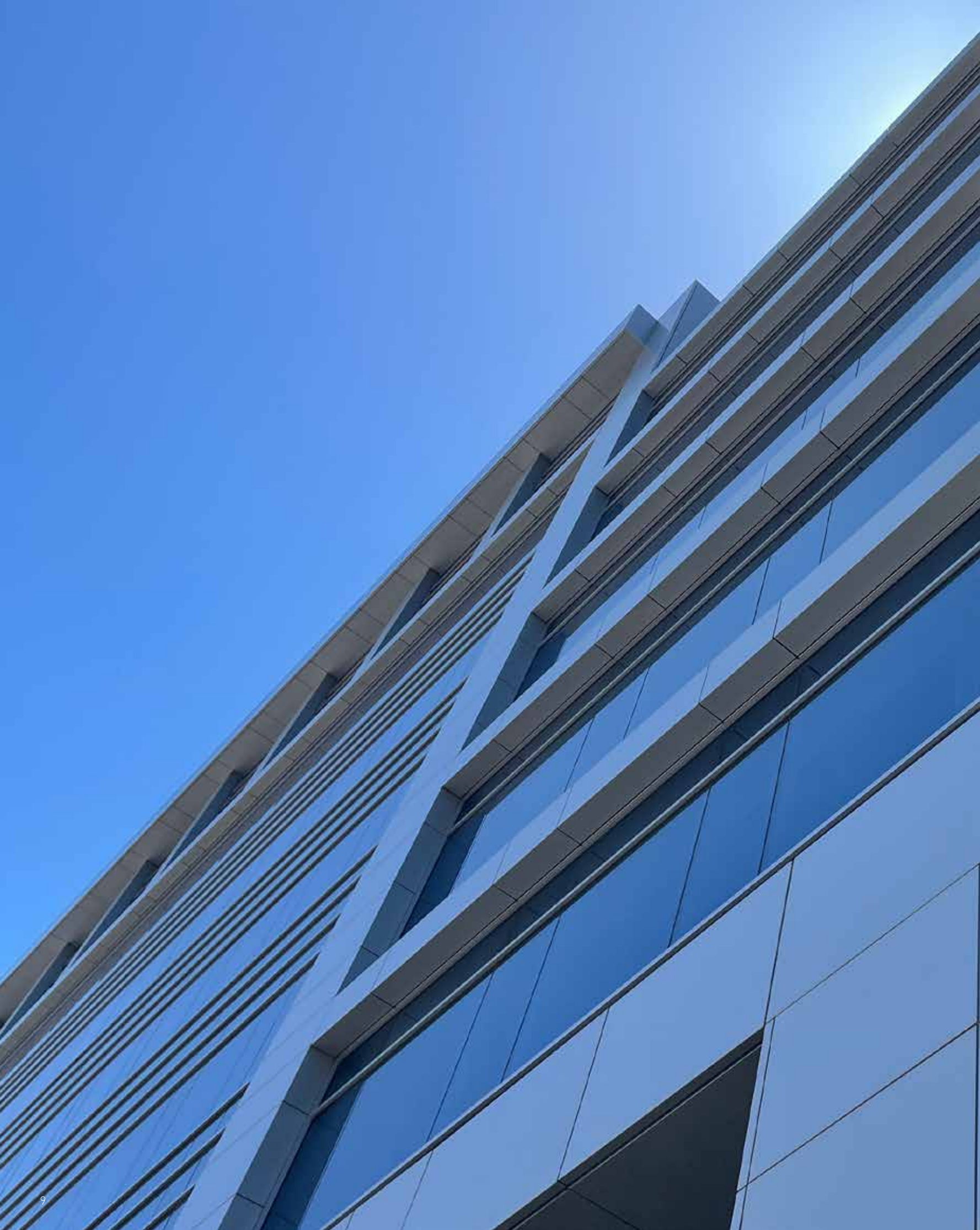
We have successfully been awarded with ISO 9002:1994 certifications since 1997 and upgraded to ISO 9001:2015. Kam Pin has also applied environmental management standard ISO 14001:2015. We continue to upgrade our standards to meet our customers needs in every market.

金邊在 1997 年成功認證品質管理系統 ISO 9002 : 1994 ， 2018年升級為ISO 9001 : 2015 ， 2016年成功認證環境管理系統 ISO 14001 : 2015 。如欲索取進一步資料，歡迎查詢。

PVDF  
COATING  
氟碳噴塗















West Kowloon Terminus Station, Express Rail Link, Hong Kong | 香港廣深港高速鐵路西九龍總站

## KYNAR 500®

KYNAR 500®, a registered trademark of Arkema Inc., is a fluoropolymer resin used in paint formulations for exterior and interior metal finishes. The key to its durability and resistance performance is the carbon-fluorine bond, one of the strongest molecular bonds known. The resin has been proven to resist acid rain, erosion, airborne pollutants, dirt retention, ultraviolet light, and extreme temperatures. Finishes with KYNAR 500® base offers color uniformity and texture consistency over long periods of time.





## 氟聚合物樹脂噴塗

KYNAR 500® (阿科瑪公司註冊商標) 是一種製造油漆的氟聚合物樹脂，可用作金屬的內外罩漆。氟與碳的結合是目前最穩固分子，經得起各種侵蝕。這樹脂已證實能夠抵抗酸雨、空氣污染物，紫外光及極冷熱的溫差，並且不會積聚污垢。含 KYNAR 500® 的面漆不但表面平滑，而且能確保外牆長期維持均勻，更抵禦侵蝕。



# PVDF COATING 氟碳噴塗

PVDF paint has excellent weatherability, with little or no cracking, peeling, chalking, or fading. As the originator of fluoro-polymer resins for architectural coating, Arkema Inc. has been manufacturing KYNAR 500® resins since 1965. KYNAR 500® based finishes are used on many of the world's monumental structures. Kam Pin is a global certified applicator for leading paint suppliers of KYNAR 500® PVDF paints such as PPG and Sherwin Williams®, and also other PVDF paints such as Akzo Nobel and many more.

Arkema Inc. 自 1965 年開始製造 KYNAR 500® 樹脂，首創使用氟聚合物樹脂製造建築用面漆，世界上多幢宏偉的建築物已採了 KYNAR 500®面漆。金邊擁有豐富的噴塗經驗，是榮獲多家油漆供應商的全球認證客戶，例如：PPG、宣偉、阿克蘇諾貝爾等著名品牌。

KYNAR 500® based coatings are used on such architectural building materials such as roofing and siding; extrusions and panels; curtain walls and window frames; shop fronts and lighting fixtures; retail store interiors and louvers; ventilation parts and outdoor signage.

一般建築材料都適用 KYNAR 500® 塗層，包括：幕牆鋁板、天花屋頂組件和百葉等。





# KAMELEON™ PVDF COATING 變色龍氟碳噴塗

Kameleon™ PVDF paint can come in a vast variety of colours, but none as unique as PVDF Kameleon Coating Systems. Kameleon Colors are available in a range of colour shifting, gradient pearlescent, colors, with custom colors created upon request. The Kameleon™ coating is applied in a three coat system with primer, base coat and color shifting clear coat, resulting in a highly durable end product that offers the same advanced protection as 70 percent PVDF Fluoropon™ products.

變色龍氟碳噴塗系列有多種漸變珠光顏色，亦可根據客戶要求訂製指定顏色。變色龍氟碳噴塗應用於三塗配方體系，包括底漆、面油和漸變色清漆，高度耐用，具備宣偉氟麗朋70%氟碳系列產品的先進防護。

**This innovative coating uses mica flakes to create a consistent iridescent, gradient look. A blend of ceramic and inorganic pigments creates an original, brilliantly subtle look.**

創新的變色龍系列採用雲母片，打造出均勻漸變的絢彩色澤。陶瓷與無機顏料的混合配置，呈現出獨特而細膩的亮麗色調，具有恆久不變的驚艷美感。是大型地標性高樓、商用建築與住宅樓房的理想之選。







11Skies, Hong Kong International Airport | 香港國際機場航天城11Skies



NATURAL  
PATTERNED  
PVDF COATING  
氟碳仿自然圖案噴塗





**Buildings all over the world have been decorated with all types of natural materials. Natural materials can make a building look unique in color, texture and appearance. Materials like stone, terracotta, wood, or aged metals make for popular options to create a unique facade design.**

世界各地的建築物用各種天然材料裝飾外牆，使建築物在顏色、質感和外觀上更具特色。石材、陶土、木材或氧化金屬等材料是幕牆設計的傳統選擇。雖然這些物料為建築物帶來獨特性，但它們也有其限制，例如：蘊藏量、

Although these materials bring uniqueness to a building, they have their disadvantages. They can be costly, have size limitations, weight limitations, and a shorter life cycle. There are many aspects that need to be considered when using natural materials; such as the materials cost, overall building load, production feasibility, installation time and installation cost. These areas of the building need to be carefully calculated when using natural materials.

切割尺寸、重量限制和壽命週期。由於天然材料存在比較多變數，用家需要顧慮許多因素；如材料開支、整體建築負荷、生產可行性、安裝時間和成本。

**We've got an alternative with a natural look.**

當考慮採用天然物料或素材時，我司提供另類選擇，更易實現設計原想。



Taiping Finance Tower, Shenzhen, Mainland China | 中國深圳太平金融大廈

**NATURAL PATTERNED PVDF (NPP) coating is a coating system developed inhouse, by Kam Pin, using PVDF paint on aluminum panels to replicate any natural material's pattern and appearance.**

## **STONE · TIMBER · TERRACOTTA · AGED METALS**

### **石紋 · 木紋 · 陶板 · 仿古金屬**

The replication process starts by targeting a specific material for a building's facade or decorative cladding. Our pattern engineers dissect and gather all the information from the targeted material; such as the patterns, colors and textures. Once this information is acquired, our engineers can completely customize the coating finishes. Colors can be altered to match a material or to change the entire visual appearance. Patterns can be customized by adding or subtracting patterns, or even blowing up and shrinking the pattern's size. The texture of the finish can also be customized to achieve a rough, sand textured finish or a glazed, glossy finish. All these details can be customized to achieve a unique coating finish specially made for your project.

金邊自家研發的仿天然材料氟碳噴塗，可模仿天然素材的紋理和質感。過程分為兩部份，首先客戶挑選大廈幕牆裝飾的素材，然後讓金邊的工程師蒐集來自目標材料的紋理、顏色和質感等資訊，進行剖析，當我們完全掌握圖案特徵時，便能按客戶要求度身訂造獨特的塗層效果。

1. 客戶可自由增減或修改圖案的數量和大小來創造新外觀；
2. 客戶可改變顏色襯托其他周邊建材料，甚至改變其整體的視覺效果；
3. 客戶可決定塗層的表面質感，以實現粗糙、砂粒或釉面的外表。





Taiping Finance Tower, Shenzhen, Mainland China | 中國深圳太平金融大廈





Equinox Hotel VMU, Seattle | 美國西雅圖 Equinox 酒店視覺樣板





# CUSTOMIZEABLE

## 個性化訂製

在噴塗過程中，金邊半自動化噴塗工藝能實現不重複的紋理，每塊面板具有不同的圖案，大幅增加隨機性，打破一式一樣的格局。

During coating application, the coating process is half automated and half manual to achieve a non-repetitive pattern from panel to panel. Like an art piece, our application process can paint each panel with its own unique pattern to break away from repetitiveness in the facade. Each panel is coated to have its own pattern to achieve a natural appearance, but panels can also be designated with a specific pattern to achieve a required appearance or repetitiveness.









# STONIUM PVDF COATING 仿石紋氟碳噴塗

**Stonium PVDF coating is a great alternative for real stone**

Stonium PVDF can replicate any type of stone with 90% likeness. The patterns can be customized and mass produced, eliminating the trouble of sourcing natural stone and its inconsistent appearance. The coating's colors, patterns and textures can be completely customized to achieve a desired result, making this the perfect alternative product for any desired stone. This coating type is used on aluminum panels, which provides a very light alternative to natural stone panels. This product helps to lighten the entire building load and is very easy to install. It can help reduce the cost of the whole curtain wall system and also the installation cost. Stonium PVDF Panels make a great alternative product for buildings with stone designs.

石材縱然被廣泛用於建築物外牆，但也有其缺點。沉重的真石不單會導致安裝過程速度緩慢，而且會增加整體建築物負荷，還有安全隱憂。利用石材製作面板的尺寸限制多，現時可使用於建築物外牆的石材款式及種類非常局限，在某些情況下，每批石材都可能有數量和外觀的限制。金邊仿石紋氟碳噴塗可以消除以上限制，仿石紋氟碳噴塗面板減輕了整個建築負荷，並且提高安全系數及安裝非常簡單，有助降低整個幕牆系統的成本和相關的安裝費用。選用仿石紋氟碳噴塗，金邊可以按批量生產石材圖案的鋁板，移除了對材料缺乏的擔憂。這種塗層的顏色、圖案和紋理可以完全訂製以達到設計師理想的效果，使其成為石材的另一選擇。









Taiping Finance Tower, Shenzhen, Mainland China | 中國深圳太平金融大廈







# TERRIUM PVDF COATING 仿陶紋氟碳噴塗

Kam Pin has developed a coating system that looks and feels exactly like Terracotta. Our Terracotta PVDF coating brings together the aesthetics of Terracotta with the longevity of PPG's Kynar 500® PVDF coating, with a warranty of 20 years. This coating system can be used on aluminium extrusions, aluminium cladding and other aluminium products. Terrium PVDF coating can be coating onto any size and shape of aluminum products.

金邊開發的仿陶土氟碳噴塗擁有極高的像真度。我們的仿陶土氟碳噴塗結合了陶土的美觀性及PPG Kynar 500® 氟碳噴塗的耐用性，能提供20年的品質保證。此技術能應用在不同形狀和大小的鋁型材、鋁幕牆等鋁製件。





Park Court Hamarikyu The Tower, Tokyo, Japan | 日本東京浜松町1丁目浜離宮住宅項目







# TIMBRIUM PVDF COATING 仿木紋氟碳噴塗

Timbrium PVDF coating uses PVDF paint to replicate wood finishes with the longevity of PVDF paint, carrying a 20 year warranty. PVDF has high UV protection qualities, allowing the coating to keep from color fading, chalking or peeling off.

**This coating system can be customized to achieve a desired effect. The wood grain patterns can be altered to be thinner or thicker, the colors can be changed, and the textures can be altered to have a rough finish, gloss finish or a textured grain finish.**

金邊仿木紋氟碳噴塗擁有20年保質期，塗層高度抗紫外光，持久耐用，防止粉化、褪色或剝落。透過改變木紋紋理的粗幼度、顏色，讓產品外觀呈現出逼真的木材紋理，甚至按客戶需求將表面質地定為粗砂面、光澤釉面及坑紋板面。





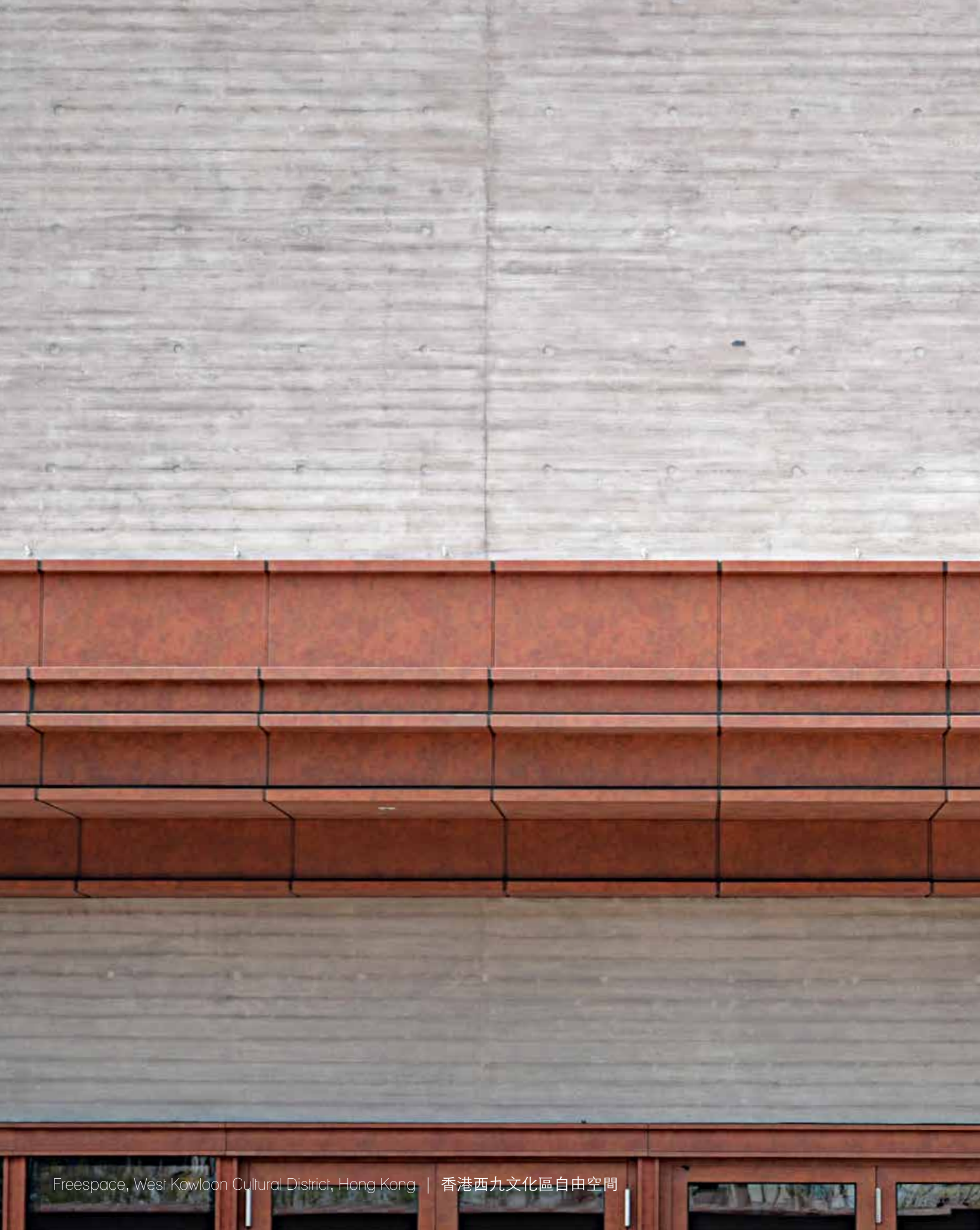
















# METALIUM PVDF COATING 仿金屬氟碳噴塗

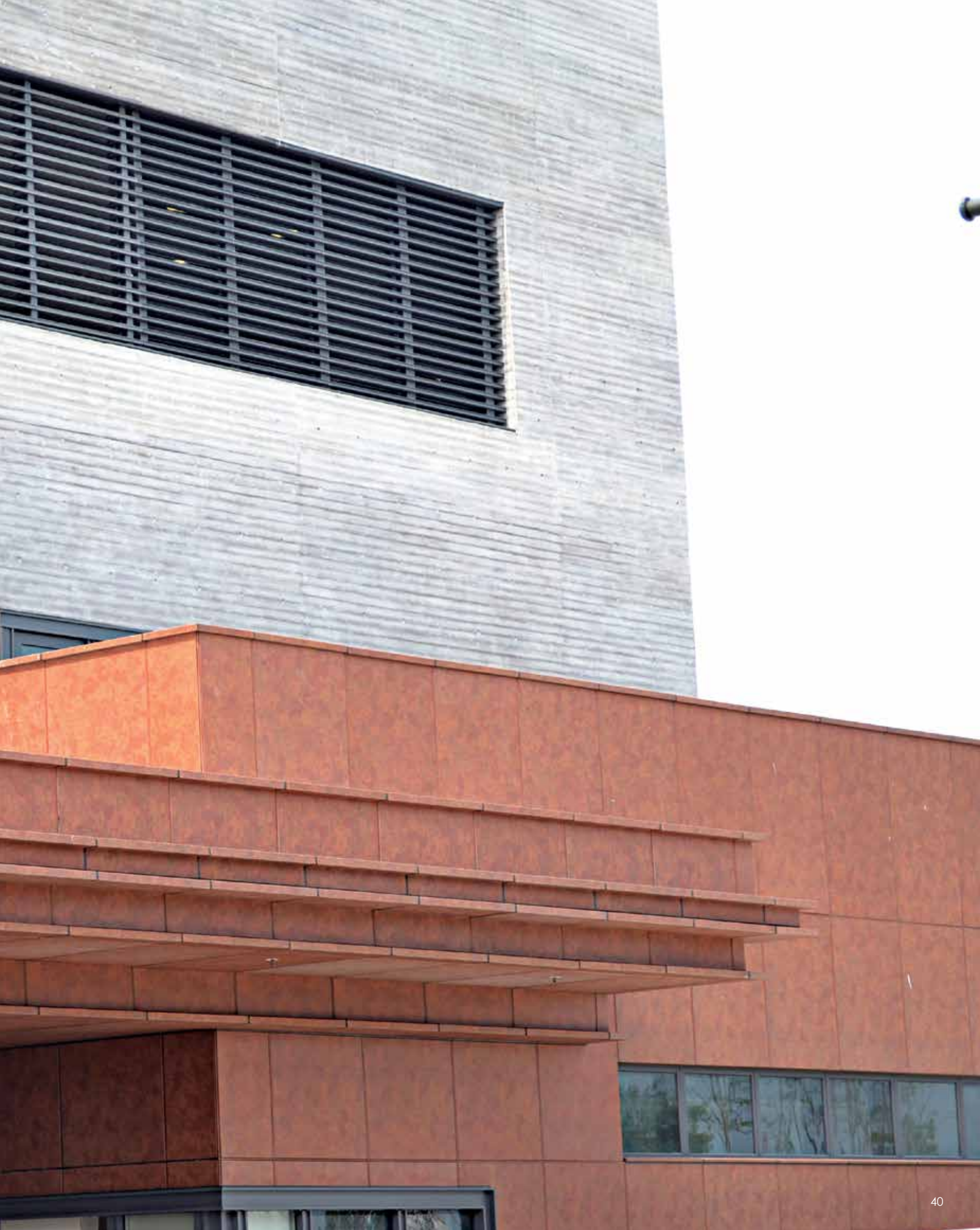
Besides aluminum, there are a wide variety of metal based materials that are popularly used on building facades. Among these metals are specially aged metals; for example rusted steel and patina copper. These types of finishes come from a corrosion effect, causing the metal to change color and texture. Although beautiful and distinct, this type of finish has risk of further corrosion that can be damaging to the entire facade. The continuous oxidation can eat away at the material and in some cases creating large holes. If further corrosion occurs, the overall appearance of the metal can change with unwanted corrosion patterns.

**NPP Coating can replicate the aged corrosion effects with PVDF coating but without the risk of further corrosion. This coating is an alternative product to rusted or other aged metals, but with the longevity of PVDF coating. Metalium PVDF panels comes with 20 years warranty.**

氧化金屬飾面一般來自化學處理，令金屬改變顏色和紋理，雖然美觀而獨特，但這種飾面有進一步腐蝕的風險。風化侵蝕亦會加劇氧化表面，在極端情況下甚至會產生大小不一的洞孔。金屬飾面的整體外觀會變得不規則。仿金屬氟碳噴塗有效防止以上的不良後果，其產品外觀完全不依賴化學反應，而是使用特殊的噴塗技術。實現像真度高的的復古金屬，從青銅鏽、鐵鏽、氧化鈦，以至其他您能想得到的表面效果。







POWDER  
COATING  
粉末噴塗





# POWDER COATING

## 粉末噴塗

Powder Coating is an Epoxy, Polyester or Polyurethane resin based dry powder to be applied onto metal surfaces through an electrostatic spraying system. Powder Coatings can provide high chemical and solvent resistance, plus high corrosion and detergent resistance with high flow-out and glossy finishes. One of the most important features of Powder Coating is its resistance to mechanical impact. It is not only ideal for finishing at adverse conditions but it can also be used in areas where mechanical impact is expected; such as reinforcement bars, iron beams, window frames, doors, signage's, shop fronts and claddings.

利用靜電噴塗的原理，把乾燥粉狀物吸附在金屬工件上，經過高溫烘乾後，粉狀物固化成為一層堅固光亮之塗層。製造粉狀塗料的主要成份有環氧樹脂、聚脂、聚氨脂，以及它們的不同組合。粉末噴塗可防禦化學溶劑、酸、鹼及防紫外光等侵蝕，表面平滑光亮；另外，最重要一個特質就是耐碰撞及磨擦。此類粉末噴塗特別適用於鋼、工字鐵、窗框、門、招牌、商店門面裝飾及室內金屬牆等材料上。







HEAT TRANSFER  
POWDER COATING  
多彩粉末噴塗





# HEAT TRANSFER POWDER COATING

## 多彩粉末噴塗

**Heat Transfer Powder (HTP) Coating can simulate different patterns or images such as marble, wood grains and logos. Each pattern can achieve a reproduction accuracy of 90% of the original pattern. New designs are continuously being added and custom colors can be created.**

多彩粉末噴塗可模仿及噴製出不同花紋及圖案，如大理石紋、木紋、商標和圖案。任何影像均可仿做，而仿真度可達到90%。為了讓客人有較多選擇，我們不斷創造新設計及顏色。

HTP Coating uses heat transferring technology to achieve these wood and stone patterns. Ink patterns are applied onto a film, which is then wrapped around a special powder coated panel. The panel is baked a second time to sublimate the ink patterns into the powder coated layer. This process secures the patterns into the powder coating make it extremely durable.

熱轉印粉末塗料首先將粉末塗層施加到鋁工件上進行烤焗，然後利用一塊帶有木紋或石頭圖案的油墨薄膜包裹工件，再透過熱力昇華作用將墨水轉移到成品粉末塗層中，使之成為塗層的一部分並受保護。

The maximum dimensions available are 1600 x 4000mm. AMP products are very durable, they can be placed in both indoor and outdoor environments, as the finish has great resistance to humidity and ultraviolet light. Also ink, paint and dirt are easy to remove making maintenance very convenient.

最大加工尺寸為1600x4000毫米。多彩粉末噴塗能提供保護及美化功效，也易於清潔。經噴塗加工後的產品可防止氧化侵蝕，即使被放置在戶外，仍可抵受日曬雨淋。

















POLYURETHANE  
COATING  
聚氨酯噴塗







## 聚氨酯噴塗

聚氨酯噴塗是一種低溫固化的優質雙組份塗料，適合用於需要特強保護性的環境下使用。聚氨酯噴塗具有以下特質：

- 高光澤
- 漆膜堅固耐用
- 附著力極佳
- 色澤持久不變
- 具有特強的耐黃性及優良的抗磨損性
- 能抵抗一般酸、鹼、溶劑、水及化學物品侵蝕
- 可配製多種顏色





## POLYURETHANE (PU) COATING

Polyurethane (PU) Coating is a high quality two-component polyurethane coating specially designed for industrial and heavy duty environments where protection and decoration are of prime importance. PU coating can carry super high gloss characteristics and excellent color and gloss retention. It provides outstanding resistance to yellowing, impact, abrasion and scratching. It is excellent in weathering, resistance to acid, alkalis, solvents, water and chemicals. PU coating is available in a wide range of colors.

# METAL FABRICATION

## 板金加工











KP  
↑ 客服中心 (Customer Service)  
← 寫字樓 (Office)  
動物場 (Canteen)  
宿舍樓 (Dormitory)  
→ 停車場 (Parking)  
東莞廠房 (Dongguan Factory)

A

Kam Pin has been fabricating exterior architectural products since 1994. We provide custom metal fabrication using the best materials and technology. We are specialists in manufacturing aluminum building materials such as curtain wall panels, aluminium cladding, ceilings, louver systems, window frames, partitions and signage's.

為了提供一站式服務給顧客，1994年金邊成立了自家的鋁金成型部門，主要生產幕牆鋁單板、天花、屏風、百葉系統、窗框、招牌及鋁型材加工等。

金邊提供五金加工諮詢服務，配合廠內先進器械，為客人實現各式各樣的板金成型。

## Kam Pin is known for its intricacy and problem

關於五金加工成型的技術問題，我們都能為你一一解決。

Our facilities offer the following fabrication processes:

### 五金加工與組裝

---

- Shearing 剪板
- Perforation 沖孔
- CNC Milling 雕刻
- Structural Sealant Installation 耐候膠施工
- Double Sided Tape Installation 雙面膠貼施工
- Brake Forming 折彎
- Single Curvature Bending 單弧成型
- Simple & Complex Welding 燒焊
- Studwelding 種釘
- Stiffener Assembly 加力骨裝配
- Double Curvature 雙弧成型
- V-cutting for sharp angles 刨坑

Our maximum fabrication capability are 2.5 meters x 6 meters (8 ft x 20 ft). 我們最大的加工尺寸為2.5 x 6米。













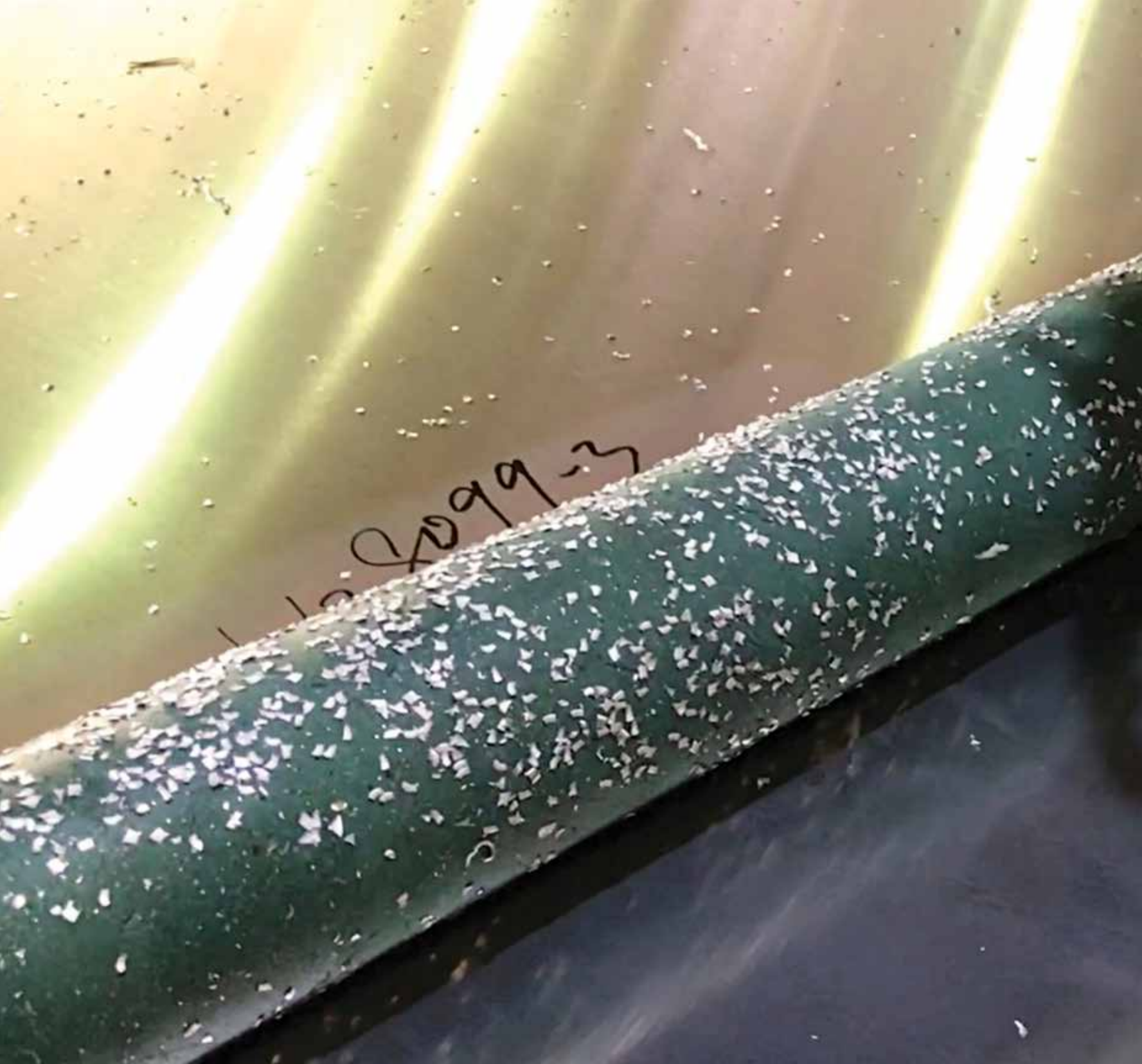
## COMPLEX BRAKE FORMING 複雜板金加工

Fabricating complex geometric forms is our specialty. Our engineers are skilled in creating efficient and quality fabrication planning for complex formed aluminum panels. We focus our efforts into the craftsmanship of each panel, ensuring that our bending, welding, and grinding processes achieve the highest quality standards in the world. Our high quality fabrication allows us to meet worldwide standards, which has enabled us to supply panels to many landmark projects all over the world.

金邊擅長製造不規則形狀的五金製品，工程師為複雜的鋁合金面板規劃高效生產流程。我們專注每件面板的細節，確保我們的折彎、焊接和打磨工藝達到國際質量標準。高品質的製造能力，引領我們能參與世界各地具標誌性建築物的項目。

**Our brake presses can reach a maximum length of 6 meters. The maximum panel width we can fabricate is 2.5 meters wide. We are also capable of fabricating almost any panel thicknesses.**

我們的折彎機最大的加工尺寸為 2.5 x 6米的鋁板。我們還能夠處理各種厚度的面板。







## CNC ROUTING & V-CUTTING

Our CNC routers and CNC v-cutting tables are used to cut out intricate shapes and sizes. The v-cutting process is also used to create sharper corners on panels by cutting a v-shaped groove along the back of the panel where the bending edge is located. After bending along the v-cut groove, the result is a smaller radius corner, making the panel corners look sharper.

## 電腦數控雕刻及刨坑

雕刻機及刨坑機能加工出獨特而複雜的外型。刨坑就是在工件背後先開一道V型坑槽再摺彎，使工件轉角的外觀變得更精巧幼細、尺寸更精確。



## SINGLE CURVE PLATE ROLLING

# 單曲板捲製

Plate rolling is a fabrication process that shapes a panel into a round or conical shape. Our plate rolling machine can shape panels up to 4 meters long and with a minimum radius of 300°. This machine is great for fabricating column covers or cladding with a curved shape.

板捲製 是將平板成型為圓形或圓錐形的製造工藝。我們的捲板機可加工長達4米的工件，最小半徑為300毫米。該機器非常適合製造圓柱板或弧形面板。





Elevated Landscaped Deck, Kai Tak Cruise Terminal, Hong Kong | 香港啟德發展二期空中花園



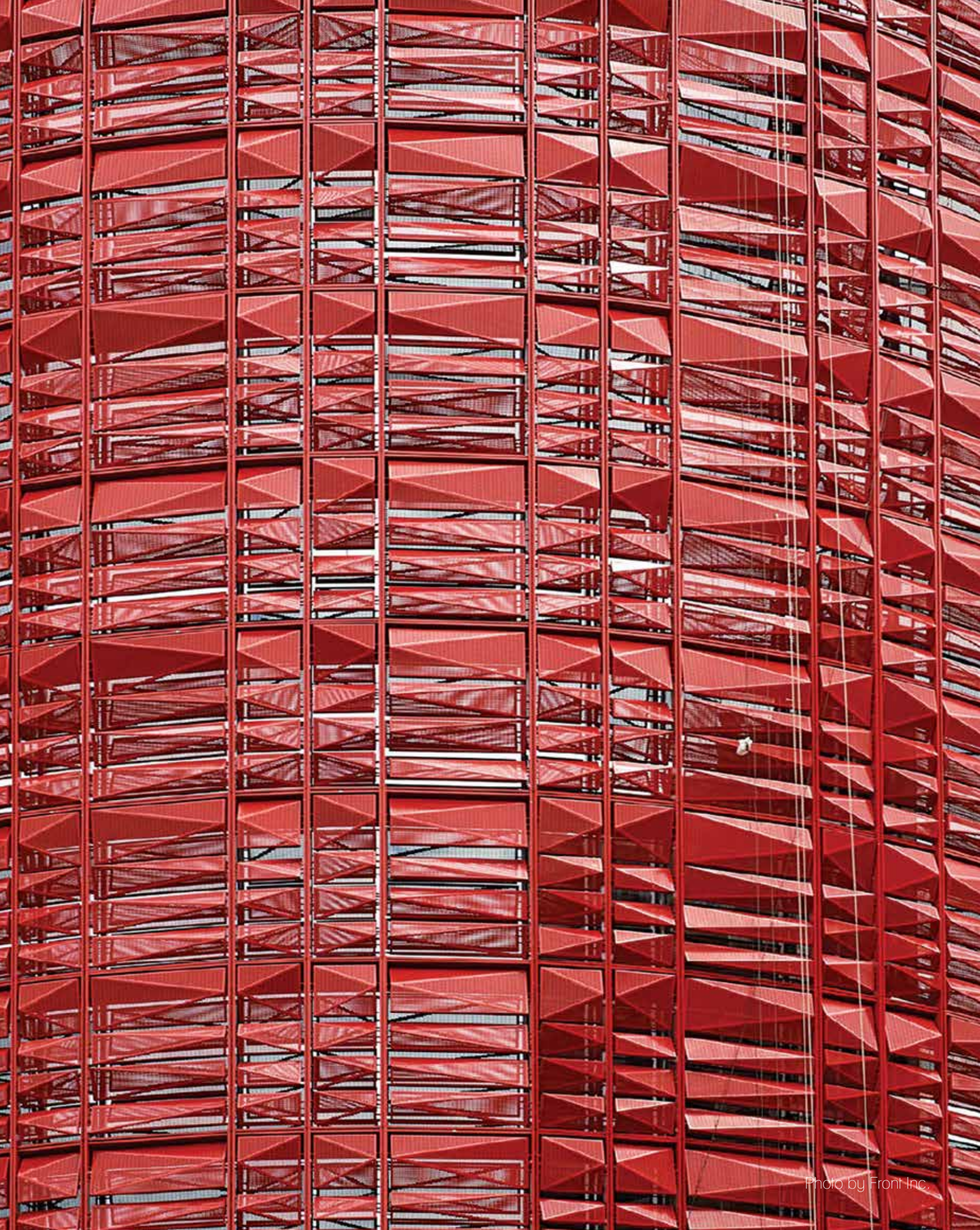
# PERFORATED PANELS 沖孔板

Our CNC punch and High Speed Turret Punches can punch standard perforations or complex perforation patterns. We carry a wide variety of perforation shapes and sizes. If we don't have something you need, we can custom make a punches that suits your project. We have completed many jobs with perforation and is experienced in developing any type of perforation designs you may have.

我們的數控沖床和高轉速沖床可以製作出標準或複雜的沖孔圖案。我們製作各種的沖孔形狀和尺寸，亦可定制模具，並且在開發穿孔設計方面經驗豐富，能向客戶提供加工意見。











18 King Wah Road, Hong Kong | 香港北角京華道18號商業發展項目

## DOUBLE CURVATURE FABRICATION

**There are different methods of tackling double curative fabrication. Depending on the complexity of the curvature, some techniques are more complex than others. Our engineering team has the ability to analyze the curvature and know which methods are most suitable to mass produce the panel's design.**






Our fabrication department has the technology and know how to achieve the different methods of double curvature fabrication. Through our experience with different projects and mock ups, we have equipped ourselves with the skills and machinery to tackle the difficulty of fabricating these beautiful, but complex, panel designs.

## 雙曲五金製作

金邊有豐富的雙曲板加工經驗及技術，配合先進機械設備，與客戶開發美觀而複雜的設計。工程部透過分析工件的形狀、大小和要求等數據，會選取不同的製作方式進行樣辦製作或批量生產，以得出最佳的解決方案，讓客戶的獨特建築設計能得以實踐。

A photograph of a modern building's interior. The ceiling is dark with horizontal slats. A large window on the right side shows a view of a skyscraper with a grid-like facade. The sky is light blue with some clouds. The text is centered in the middle of the image.

BRINGING TO LIFE YOUR IDEAS  
金邊製造實現你想





**hong kong**

# westlink

airside

11 skies, HK airport

2a taikoo place development

elevated landscape deck

sai kung hotel at wai man road

# la vetra, residential housing

# freespace, west kowloon cultural district

# h2 tower, new world centre, tst

metroplaza renovation

west kowloon terminus station

iron man experience, disneyland

citic tower renovation

18 king wah road

the austin &amp; grand austin

# mong kok hilton garden inn

# wan chai cosmopolitan hotel

pacific place renovation

union square, kowloon station

harbor one

soho 189

l'hotel elan, kwun tong

hksar government headquarters (tamar)

mtrc handrail renovation

happy valley racecourse

ocean park - aqua city

science park phase 2

k11

royal view hotel

olympic station development

the grandville

cyber port residential phase 3

grand waterfront

the chinese university of hong kong

civil aid service headquarters

manhattan hill

polytechnic university

hung hom bay hotel

telford plaza

shatin racecourse

sky plaza

grand stanford harbor view hotel

disneyland

four seasons hotel

peking road no. 1

wan chai police headquarters

enterprise square 3

ifc phase 2

le meridien cyberport

the lily, service apartment

krc west rail stations

aquamarine

ko shan theatre

tung chung city gate

hkcec expansion

hong kong international airport

**shenzhen**

tencent HQ

rural commercial bank headquarters

shekou design museum

# taiping finance tower

china national offshore oil corporation

zte plaza

merchanis bank

huawei administration building

classic palais

**shanghai**

# china national gold group building

shanghai arch

aimengdun

cai yuan building

x2 creativity space

huamin empire plaza

cityplaza

st. regis hotel

tomorrow square

**dongguan**

taxation bureau of dongguan hq

grace garden

parkview hotel

**suzhou**

taicang museum

commodity exchange

**beijing**

huadu center

national grand theatre

nan ying building

xin dong an plaza

pao ding plaza

**guangzhou**

gt business center

w hotel &amp; residences

favorview palace

boa shing building

**wuhan**

# a1 tower

**qianhai**

\* kerry commercial development

**macao**

louis xiii

\* venetian parcel 5 &amp; 6

# venetian parcel 3

\* four seasons

venetian parcel 2

one central macau

las vegas sands casino

lisboa hotel

crown macao hotel

wynn hotel

**philippine**

marina plaza hotel

**malaysia**

k.l. hospital

**singapore**

west gate

marina bay sands

singapore management university

**tokyo**

\* 1 chome hamamatsucho

\* hie shrine hosh-ga-oka building

nagoya station

# cartier ginza

\* takushoku university phase 3

\* koto, shinonome 1-chome

\* tokyo toyopet tama branch

nakano-4

aiemachi 1-chome

toyosu 5-chome

toyosu 3-chome office building

shibuya station

meieki 4-chome

toyosu center building annex

kpfj

surugadai university dormitory

apa hotel

**yokohama**

toshiba building

**england**

heathrow airport t5

addington hotel

romney house

**qatar**

doha high rise office building

**new york**

100 11th avenue

**chicago**

545 mcclurg

# afrcc

**washington**

the wharf

**seattle**

Bellevue 600

700 dexter

spring district block 24

rainier sq.

lincoln sq.

**san francisco**

mission rock

brokaw phase ii, san jose

\* 300 grant

lincoln center

hotel NIA, menlo park

trinity plaza

**los angeles**

l.a. south west college

**san diego**

center for novel therapeutics

san diego courthouse

kaiser san diego hospital

**arizona**

grand at papago

phoenix cityscape

**las vegas**

the cosmopolitan

**hawaii**

anaha tower

**toronto**

shangri-la hotel

trump towers

centennial place

**nunavut**

iqaluit international airport

**british columbia**

union sq., nine residential

**calgary**

wasilla library

calgary city centre

**vancouver**

empire landmark hotel

\* ferrium npp

# stonium, metalium or timbrium npp



## 香港

#westlink  
airside  
啟德發展二期空中花園  
西貢惠民路酒店發展項目  
# 西九文化區自由空間  
太古坊重建項目2A  
# 九肚山澧豐  
廣深港高速鐵路西九龍總站  
# 新世界重建項目H2大樓  
新都會廣場翻新工程  
迪士尼樂園鐵甲奇俠飛行之旅  
北角京華道18號商業發展項目  
中信大廈翻新工程  
# 旺角希爾頓花園酒店  
# 灣仔麗都酒店翻新工程  
The Austin & Grand Austin  
元朗溱柏  
中國建設銀行(亞洲)總部  
太古廣場翻新工程  
德輔道西458號維壹  
威利麻街西浦SOHO 189  
觀塘如心艾朗酒店  
香港政府新總部大樓 (添馬艦)  
香港鐵路有限公司車廂扶手翻新工程  
快活谷馬場翻新工程  
海洋公園拓展工程 - 夢幻水都  
九龍站Union Square  
科學園二期  
河內道K11工程  
帝景酒店  
瑪嘉烈醫院1期& 2期  
澳運站發展項目  
晉名峰  
數碼港住宅發展R311&R411a  
土瓜灣翔龍灣  
香港中文大學  
民安隊總部  
曼克頓山  
香港理工大學  
紅磡灣酒店  
德福廣場  
沙田馬場活動天幕  
新機場翔天廊  
海景嘉福酒店  
迪士尼樂園  
四季酒店  
北京道1號  
灣仔警察總部  
企業廣場3期  
國際金融大廈2期  
數碼港艾美酒店  
The Lily - 服務式住宅  
九龍西鐵站  
碧海藍天  
沙田馬場電算機項目  
高山戲院  
東薈城  
香港會議展覽中心  
香港國際機場

\* 氟碳仿陶板噴塗  
# 氟碳石紋 / 木紋噴塗及仿古金屬

## 深圳

深圳騰訊總部  
深圳中興通訊研發大廈  
深圳招商銀行  
深圳華為技術有限公司坂田行政大樓  
深圳中海華庭北區  
# 深圳太平金融大廈

## 上海

# 上海中國黃金大廈裙樓  
上海濱江凱旋門  
上海愛夢敦  
上海財源大廈  
上海X2創意空間  
上海華敏世紀廣場  
上海久百城市廣場  
上海紅塔山大酒店  
上海明天廣場

## 東莞

東莞市地稅局綜合辦公樓  
東莞中惠華庭  
東莞長安國際酒店

## 蘇州

蘇州太倉市圖書博物中心  
蘇州商品交易所

## 北京

北京華都中心  
北京國家大劇院  
北京南銀大廈  
北京新東安廣場  
北京寶丁廣場

## 廣州

廣州高德商務中心F2-4地塊  
廣州W酒店及公寓  
廣州彙景新城  
廣州博成大廈 (全球通大廈)

## 武漢

# 武漢天地A1樓

## 前海

嘉里前海商業發展項目

## 澳門

路易十三酒店  
# 威尼斯人3期圓頂  
\* 四季酒店服務式公寓  
\* 威尼斯人5、6期群樓  
澳門壹號湖畔  
金沙賭場  
四季酒店  
葡京酒店  
皇冠酒店  
永利賭場招牌

## 菲律賓的

濱海大酒店

## 馬來西亞

K.L.醫院

## 新加坡

西城  
濱海灣綜合度假村  
新加坡管理大學

## 東京

\* 東京浜松町1丁目浜離宮住宅項目  
\* 東京日枝神社  
名古屋站新大樓  
# 東京銀座區卡地亞大樓  
\* 東京拓殖大學三期大樓  
\* 東京江東區東雲一丁目  
\* 東京多摩市Toyopet辦事處  
中野四丁目  
東京大手町一丁目  
東京豐州五丁目  
東京丰州三丁目商業大樓  
東京涉谷駅 - 副都心線  
名站4丁目  
Toyosu Center Buidling Annex  
九段工程  
駿河台大學學生宿舍  
Apa Hotel

## 橫濱

橫濱東芝工程

## 英國

倫敦希斯洛機場 (5號客運樓)  
愛丁頓酒店  
Romney House

## 卡塔爾

多哈商業辦公樓

## 紐約

第11大道100號

## 芝加哥

545 McClurg  
# afrcc

## 華盛頓

the wharf

## 西雅圖

Bellevue 600  
700 dexter  
spring district block 24  
rainier sq.  
林肯廣場擴建

## 三藩市

mission rock  
brokaw phase ii  
\* 聖地牙哥 300 grant  
林肯中心  
hotel NIA, menlo park  
trinity plaza

## 洛杉磯

洛杉磯西南書院

## 聖地牙哥

聖地牙哥治療學中心  
聖地亞哥法院  
加利福尼亞州聖地亞哥醫院

## 亞利桑那

亞利桑拿州 grand at papago  
鳳凰城cityscape

## 拉斯維加斯

大都會

## 夏威夷

anaha大樓

## 多倫多

香格里拉酒店  
特朗普國際酒店和公寓  
加拿大centennial place

## 努納武特

伊魁特機場

## 不列顛哥倫比亞省

不列顛哥倫比亞省住宅項目

## 卡爾加里

卡加利市wasilla圖書館  
卡加利市中心

## 溫哥華

帝國地標酒店





## Hong Kong | 香港

### Headquarters | 總公司

#### Kowloon, Hong Kong | 香港九龍

5/F., Union Industrial Building,  
116 Wai Yip Street, Kwun Tong  
香港九龍觀塘偉業街116號聯邦工業大廈5字樓

Tel: (852) 2342 7988  
Fax: (852) 2341 6082  
Email: [kampin@hkstar.com](mailto:kampin@hkstar.com)

## Mainland China, Factory | 東莞廠房

### Dongguan, Mainland China | 中國東莞

Shi Xia Industrial District, Da Long Town,  
Dongguan, Guangdong, PRC  
中國廣東省東莞市大朗鎮石廈工業區金邊路1號

Tel: (86) 769 8318 2828  
Fax: (86) 769 8331 8195  
Email: [kampin@21cn.com](mailto:kampin@21cn.com)

## Mainland China | 中國

### Shanghai, Mainland China | 中國上海

Rm 1703, OOCL Plaza, 841 Yan An Road, (M),  
Shanghai, PRC  
中國上海市延安路841號東方海外大廈1703室

Tel: (86) 21 6289 3089  
Fax: (86) 21 6289 8848  
Email: [kampinsh@sh163.net](mailto:kampinsh@sh163.net)

## North America | 北美

Tel: +1 (647) 963 4223  
Fax: +1 (905) 475 0192  
Email: [kampin@hkstar.com](mailto:kampin@hkstar.com)



[www.kampin.com.hk](http://www.kampin.com.hk)

 @KAMPINLTD



Photo Credits:  
Pg 3-14, 17-50, 53-62, & 65-71 • Kam Pin Point Works Ltd. | Pg 15/16 • Valspar | Pg 51/52 • C-Monster | Pg 63/64 • Front Inc.

V-08-22

© 2022 Kam Pin Industrial (HK) Ltd.





[www.kampin.com.hk](http://www.kampin.com.hk)  
@KAMPINLTD